

**Let's Take a Peek
at Performance**



SCIP Learning Session 5

October 15, 2009

Suzanne Anders, MHI, RN, CPHQ
HSAG Clinical Quality Specialist

Information for Health Care Improvement



Two Questions To Ask Yourself

Are my SCIP rates really that great?

How will they stand over time?

Let's Take a Peek at Performance

Quality Improvement Measures for SCIP Collaborative

- Inf 1 Timely prophylactic antibiotic — within one hour prior to surgical incision (2 hours for vancomycin).
- Inf 2 Prophylactic antibiotic selection for surgical patients
- Inf 3 Prophylactic antibiotics discontinued within 24 Hours after surgery end time
- Inf 4 Cardiac surgery with controlled 6 a.m. postoperative serum glucose
- Inf 6 Surgery patients with appropriate hair removal
- VTE 1 Recommended VTE prophylaxis ordered
- VTE 2 VTE prophylaxis within 24 hours prior to surgery to 24 hours after surgery
- Card 2 Surgery patients on a beta blocker prior to arrival who received a beta blocker during the perioperative period

3

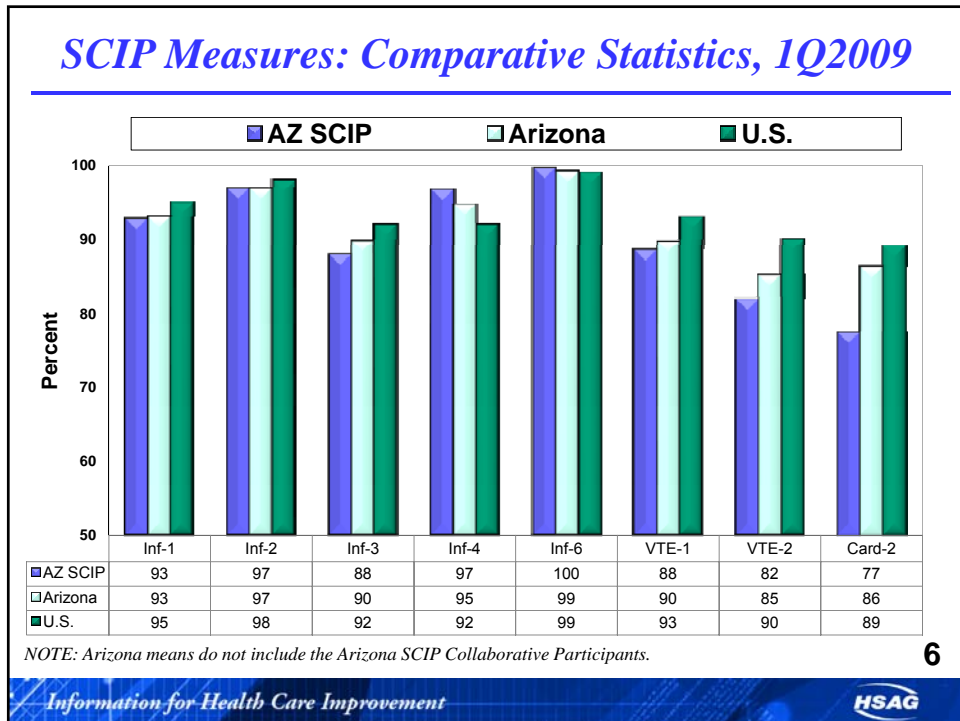
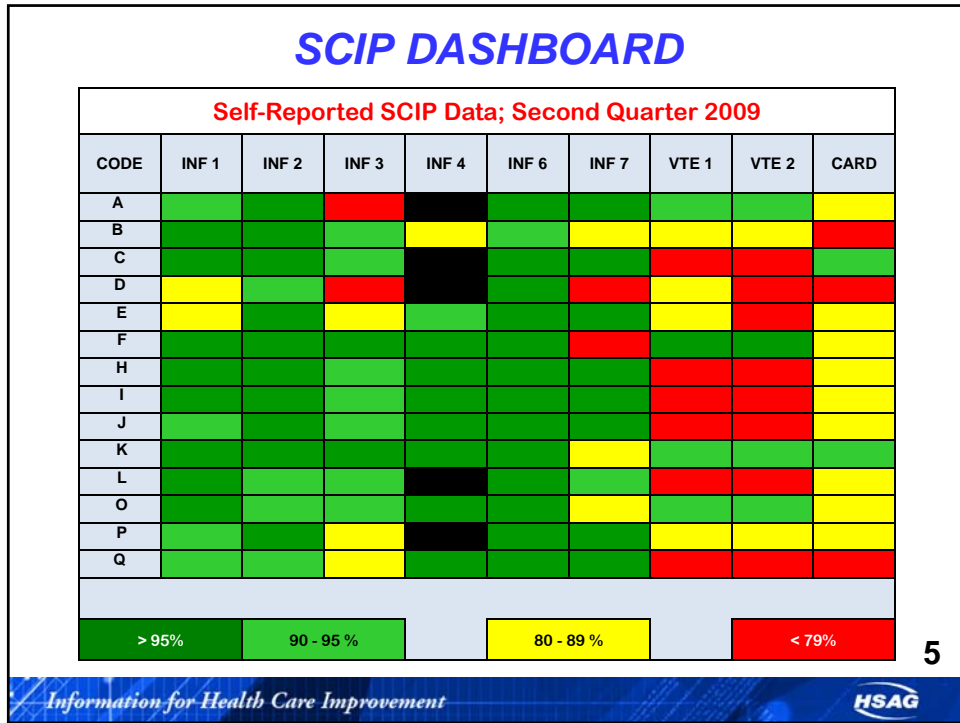
SCIP DASHBOARD

Self-Reported SCIP Data; First Quarter 2009

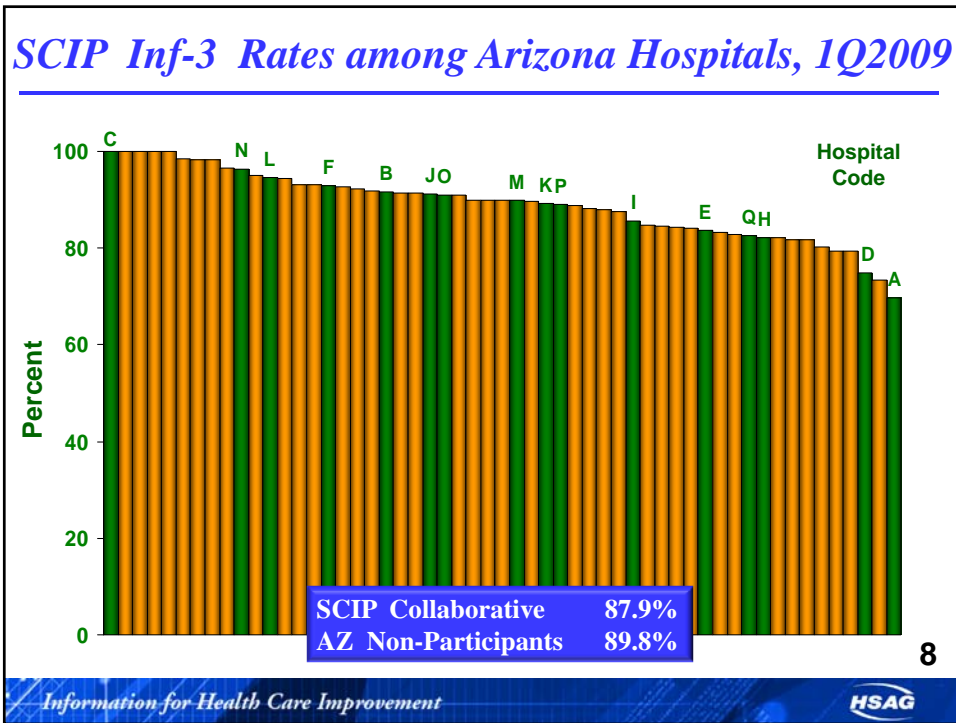
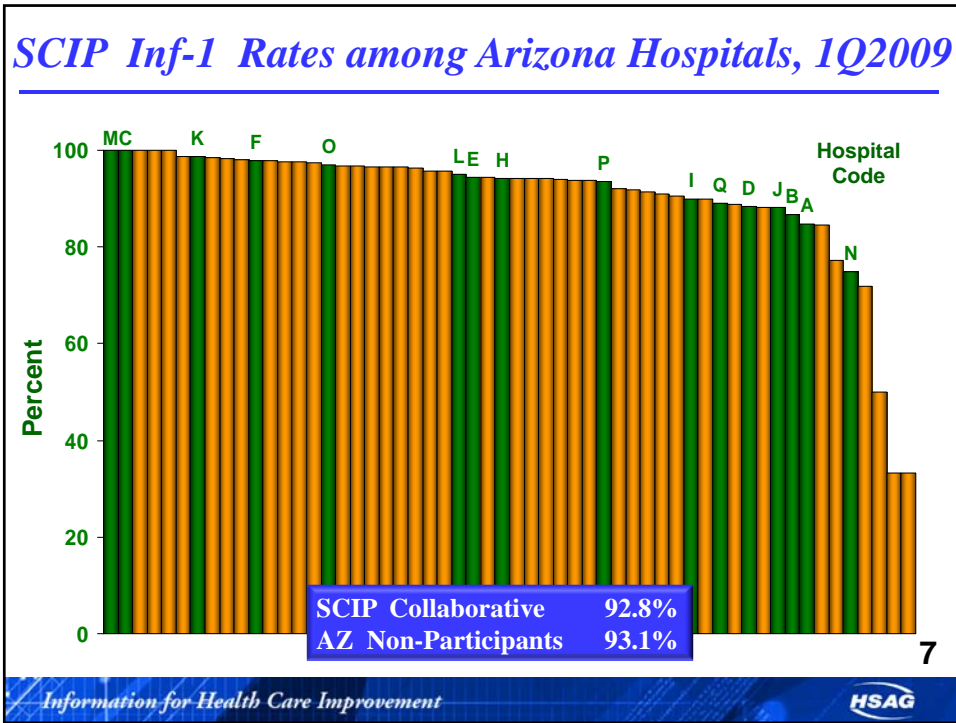
| CODE | INF 1 | INF 2 | INF 3 | INF 4 | INF 6 | INF 7 | VTE 1 | VTE 2 | CARD |
|------|--------|-------|--------|--------|-------|--------|--------|--------|--------|
| A | Green | Green | Yellow | Black | Green | Red | Green | Yellow | Yellow |
| B | Yellow | Green | Green | Green | Green | Red | Green | Yellow | Red |
| C | Green | Green | Green | Black | Green | Green | Green | Green | Green |
| D | Yellow | Green | Red | Black | Green | Red | Yellow | Red | Red |
| E | Green | Green | Green | Yellow | Green | Green | Green | Yellow | Green |
| F | Green | Green | Green | Green | Green | Yellow | Green | Green | Green |
| H | Green | Green | Yellow | Green | Green | Red | Green | Yellow | Red |
| I | Green | Green | Yellow | Green | Green | Red | Green | Yellow | Red |
| J | Yellow | Green | Green | Green | Green | Yellow | Red | Red | Green |
| K | Green | Green | Yellow | Yellow | Green | Green | Yellow | Yellow | Green |
| L | Green | Green | Green | Black | Green | Black | Red | Yellow | Red |
| O | Green | Green | Green | Green | Green | Green | Green | Green | Red |
| P | Green | Green | Yellow | Black | Green | Green | Green | Green | Red |
| Q | Green | Green | Yellow | Green | Green | Green | Yellow | Red | Red |

4

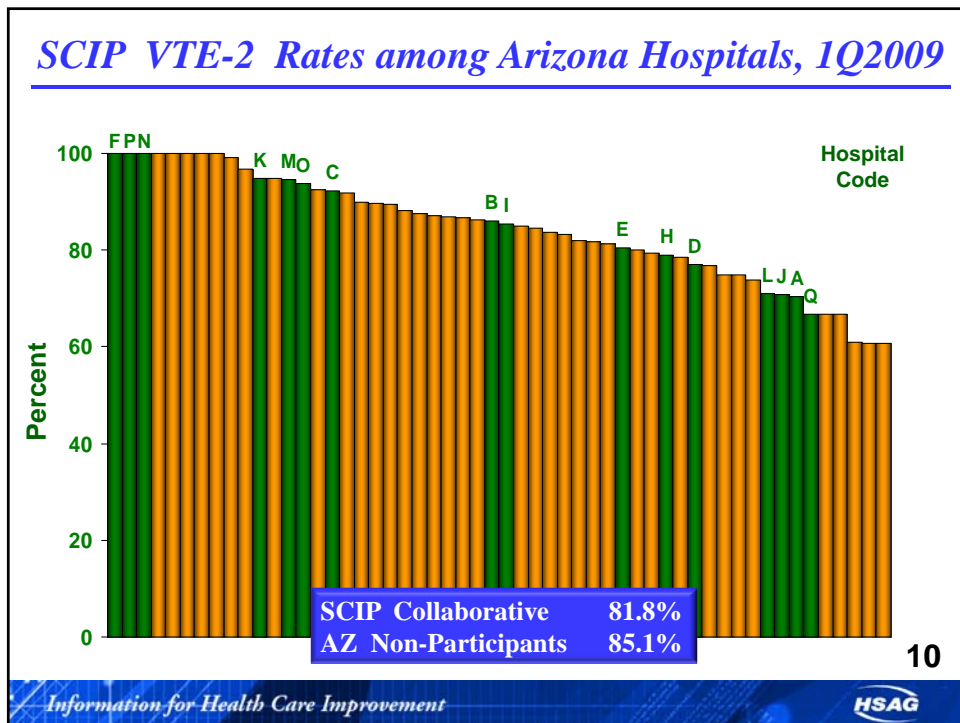
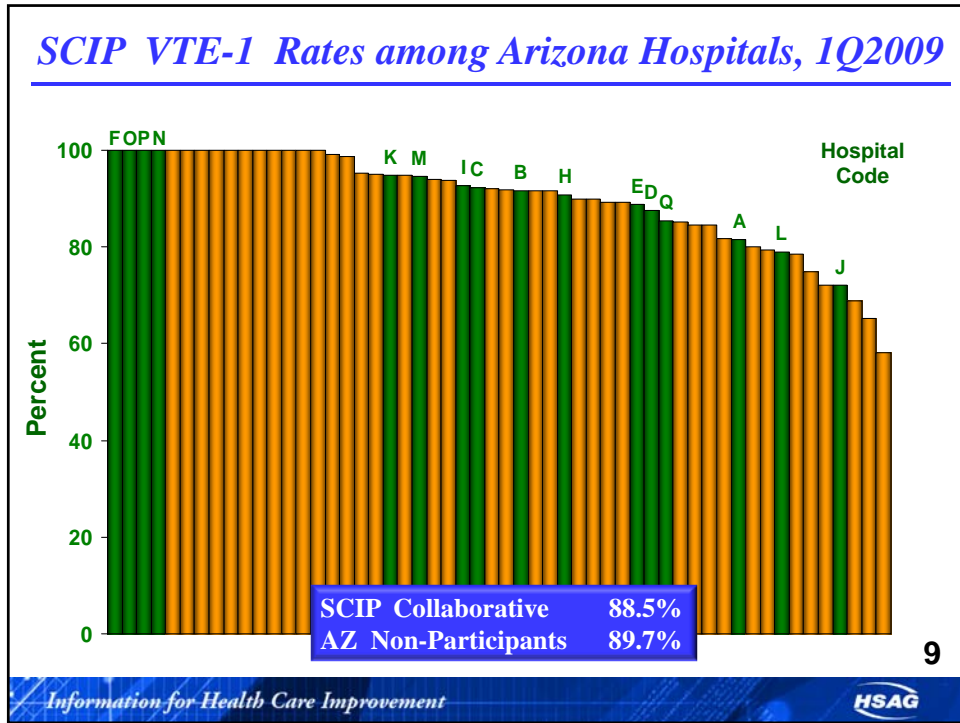
Let's Take a Peek at Performance



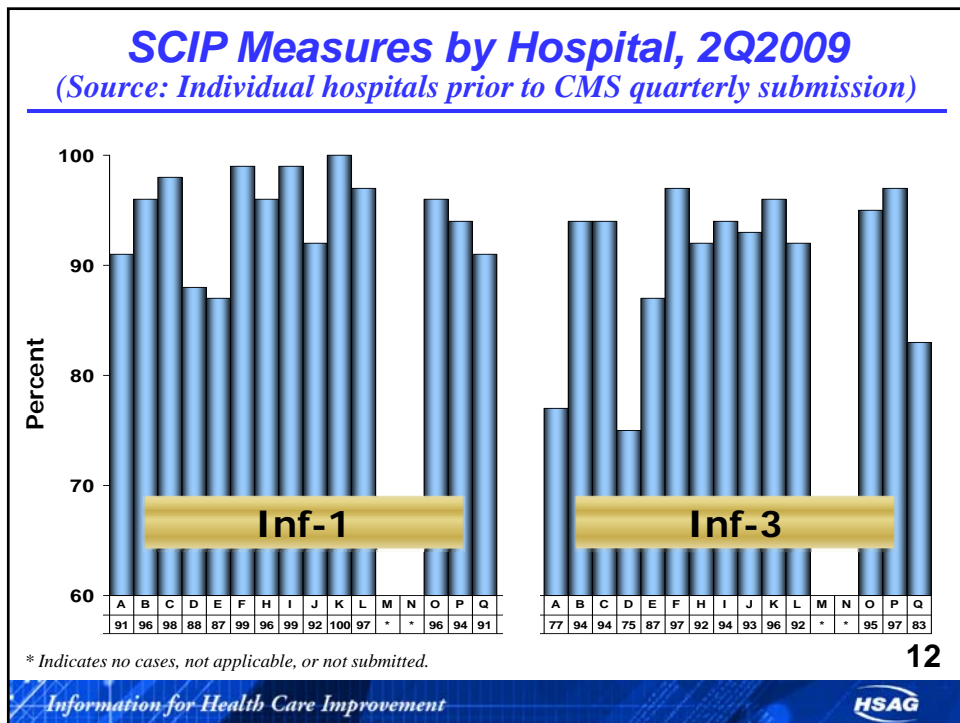
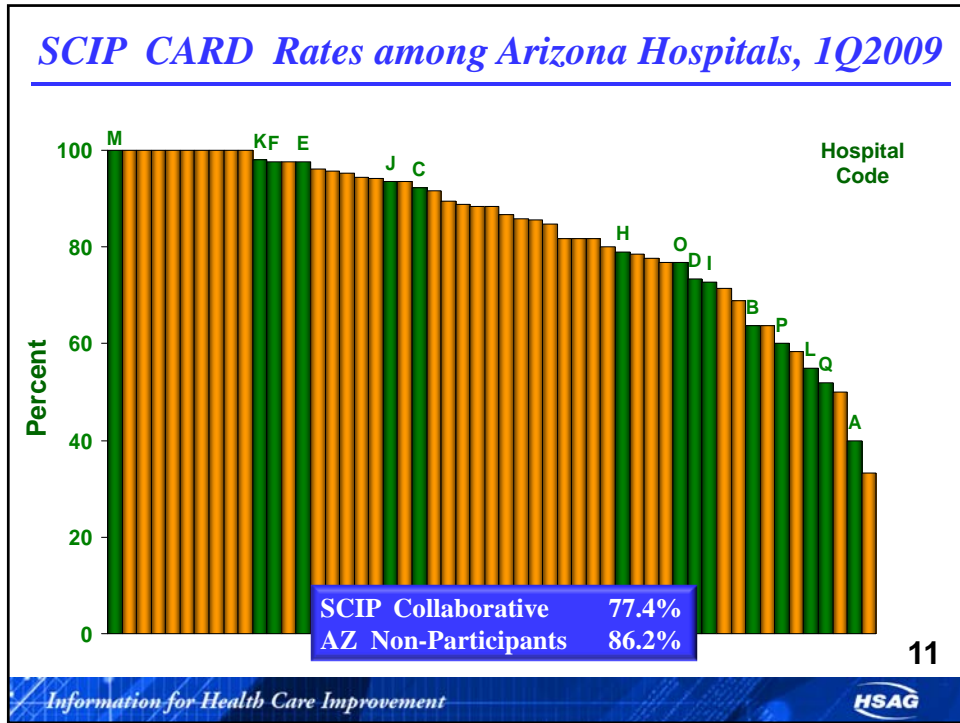
Let's Take a Peek at Performance



Let's Take a Peek at Performance

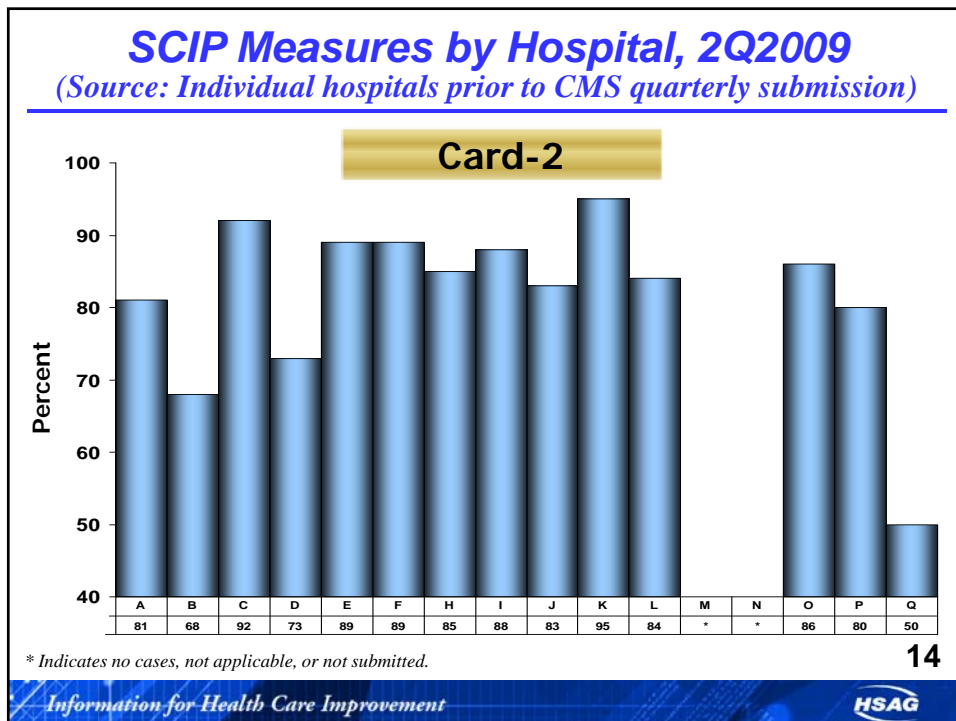
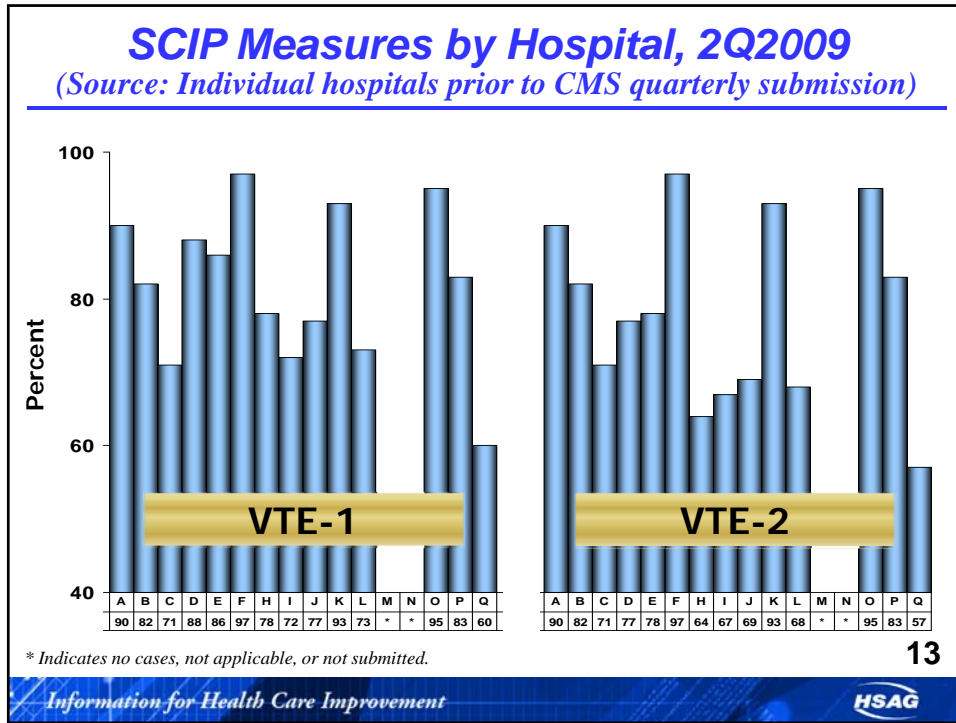


Let's Take a Peek at Performance



* Indicates no cases, not applicable, or not submitted.

Let's Take a Peek at Performance



Contact Information

Suzanne Anders, MHI, RN, CPHQ

Clinical Quality Specialist

sanders@azqio.sdps.org

520.661.9370

15

Over 1 million drug-related injuries occur every year in health care settings. The Institute of Medicine estimates that at least a quarter of these injuries are preventable.

To find out how to prevent medication errors, go to
<http://www.hsag.com/drugsafety/>.



www.hsag.com

This material was prepared by Health Services Advisory Group, the Medicare Quality Improvement Organization for Arizona, under contract with the Centers for Medicare & Medicaid Services (CMS), an agency of the U.S. Department of Health and Human Services. The contents presented do not necessarily reflect CMS policy. Publication No. AZ-9SOW-6.2.3-101409-01

16