



# California Department of Public Health (CDPH) Infection Prevention Webinar

Wednesday, March 8, 2023

# Upcoming Calls

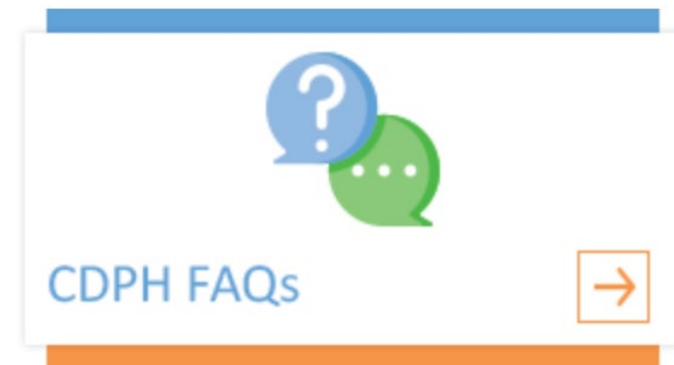
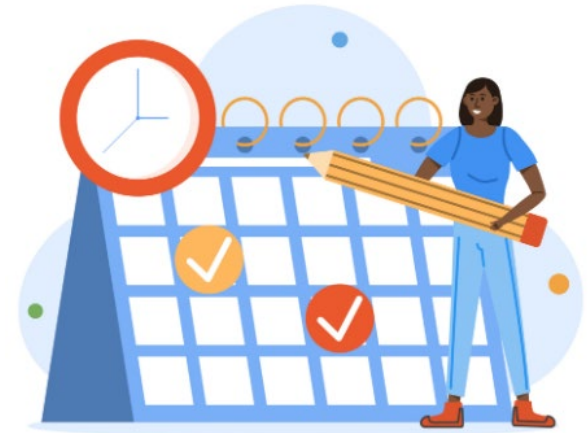


- CDPH Tuesday, 8 a.m., All-Facilities Phone Calls
  - **New Schedule:** Second Tuesdays of each month
  - Call in: **1.844.721.7239**
  - Access code: **799 3227**
- CDPH Wednesday, 3 p.m., SNF Infection Prevention (IP) Webinars
  - 2nd & 4th Wednesdays of every month
  - Register at: [hsag.com/cdph-ip-webinars](https://hsag.com/cdph-ip-webinars)
  - Recordings, notes, and slides are posted at registration site
- HSAG Tuesday, 11:30 a.m., National Healthcare Safety Network (NHSN) Updates & Office Hours:
  - <https://bit.ly/NHSNofficehours2023JanFebMarch>

# New Monthly Wednesday Webinar Schedule

## Registration Link Coming Soon

- April to October 2023—4th Wednesday every month
- November 2023—5th Wednesday
- December 2023—3rd Wednesday
  - March 22
  - April 26
  - May 24
  - June 28
  - July 26
  - August 23
  - September 27
  - October 25
  - November 29
  - December 20



# Agenda



- 2023 Educational Opportunities
- Testing Task Force Updates
- Immunization Branch Updates
- Cal/OSHA Aerosol Transmissible Disease (ATD) Standard
- Healthcare-Associated Infection (HAI) Updates
- Q&A

# 2023 Educational Opportunities

## Care Coordination

1st Tuesday

[hsag.com/cc-quickinars](https://hsag.com/cc-quickinars)



## Emergency Preparedness

3rd Wednesday

[hsag.com/epp-series](https://hsag.com/epp-series)



## Health Equity

2nd & 4th Thursdays

[hsag.com/health-equity-quickinars](https://hsag.com/health-equity-quickinars)



## Patient & Family Engagement

1st & 3rd Thursdays

[hsag.com/pfe-quickinars](https://hsag.com/pfe-quickinars)



# CDPH COVID-19 Therapeutics Provider Warmline

- Call the Warmline to immediately connect with a clinician for a free and confidential consultation on COVID-19 testing and treatment.
- Call 1.866.268.4322 (1.866.COVID.CA) Monday through Friday from 6 a.m. to 5 p.m. PST. Warmline is managed by the University of California, San Francisco (UCSF) National Clinician Consultation Center.
- Leave a voicemail after hours and your call will be returned.
- Online submission form available: <https://nccc.ucsf.edu/>
- CDPH COVID-19 Surge Readiness: Best Practice Fact Sheets
  - [Best Practices for Skilled Nursing Facilities](#)
  - [Best Practices for Long Term Care Facilities](#)

CDPH Warmline Flyer:



# Cal/OSHA ATD Standard

# Interim Guidance for Protecting Workers at Skilled Nursing and Long-term Care Facilities, Pt.1

- Cal OSHA ATD guidance
- <https://www.dir.ca.gov/dosh/Coronavirus/Skilled-Nursing.html>



# Interim Guidance for Protecting Workers at Skilled Nursing and Long-term Care Facilities, Pt.2

- If a skilled nursing or long-term care facility is not able to refer or transfer a suspect or confirmed COVID-19 patient, in addition to the requirements explained above, the employer must:
  - Move the patient in a timely manner to an airborne infection isolation room (AIIR) if the facility has one available.
  - If no AIIR is available, the facility should consult with CDPH and provide the maximum level of separation available as appropriate.
  - This may include a private room with the door normally kept closed with portable systems to create negative pressure.

# Interim Guidance for Protecting Workers at Skilled Nursing and Long-term Care Facilities, Pt.3

- Provide employees with a fit-tested, NIOSH-approved respirator whenever the employee is in the area where COVID-19 patients are located.
- Provide any medical screening or surveillance recommended by CDPH or the local health department to employees to support the early detection of COVID-19 infection.

# Placement of PPE Supplies

- **Problem:** SNF has 2-hour, fire-rated doors. Therefore, hanging PPE (gloves, masks, gowns) on the doors along with signs (and the plastic-coated metal caddy) eliminates the 2-hour fire rating. Also, there needs to be 8 feet of clearance in the corridor, so carts/containers cannot fit.
- PPE for Transmission-Based Precautions (TBP) should be placed **outside** of the room and be donned/doffed outside before entering and after exiting.
- PPE for Enhanced Standard Precautions (ESP) should be placed **inside** the room and be donned/doffed within the room; avoid PPE contamination.
- **Solutions:**
  - Use metal signs to eliminate laminated paper signs.
  - Combine signs when possible; put signs on the wall (not the door).
  - Fire Protection guidance allows up to 30% flammable material on a fire rated door, as long as the door still operates.

# Placement of PPE Supplies to Facilitate ESP

## HEALTHCARE-ASSOCIATED INFECTIONS PROGRAM

### Comparing Standard, Enhanced Standard, Transmission-Based Precautions: Implementation

Precautions	Implementation
<b>STANDARD</b>	<ul style="list-style-type: none"> <li>Hand hygiene, change PPE within room, before and after care activity</li> <li>All residents, everywhere</li> </ul>
<b>ENHANCED STANDARD</b>	<ul style="list-style-type: none"> <li>Perform resident assessment for risk of MDRO colonization and transmission</li> <li>Hand hygiene, <b>change PPE within room</b>, before and after high-contact care activities</li> <li>Residents may leave room if they are able to observe required hygiene practices</li> </ul>
<b>TRANSMISSION-BASED</b>	<ul style="list-style-type: none"> <li>Hand hygiene, change PPE <i>upon room entry and exit</i></li> <li>Confine resident to room</li> <li>Single-bed room or cohort residents with same infection</li> </ul>



Photo courtesy of Chaparral House



# HAI Updates

# California's State of Emergency Ended

- California's State of Emergency proclaimed on March 4, 2020, is terminated effective February 28, 2023.\*
  - Executive Orders related to the terminated State of Emergency are no longer in effect, e.g., certain temporary waivers.
- On Friday, March 3, 2023, CDPH announced changes to State Public Health Officer Orders and guidance:
  - Masking in healthcare and other high-risk settings
  - Vaccine requirements for healthcare personnel (HCP)
  - COVID-19 isolation guidance

\* California Executive Department. A Proclamation by the Governor of the State of California Terminating the State of Emergency. March 4, 2023. Available at <https://www.gov.ca.gov/wp-content/uploads/2023/02/COVID-SOE-Termination-Proclamation-2.28.23.pdf?emrc=1db54f&msdynttrid=obyhbGkuMqODQwLq32Jq0uMXcaduNgmlINxMmU86rcA#msdynttrid=hb6vxtu1LVYRVtApPVpZRI6jw2FOvINjM8nhGqgL9PU>.

# Masking in Healthcare Settings

- Beginning April 3, 2023, California will no longer *require* masking in indoor healthcare settings.
- CDPH recommendations are now tied to the CDC's COVID-19 Community Levels based on hospitalization rates, hospital bed occupancy, and COVID-19 incidence:

CDC Community Level	Individuals in the Community	Staff and Patients/Residents in Indoor High-Risk Settings
Low	Personal preference; consider if vulnerable	Consider
Medium	Everyone consider; recommended if vulnerable	Recommended
High	Everyone recommended; strongly if vulnerable	Strongly recommended

# Masking in Healthcare Settings (cont.)

- Current requirement remains in effect until April 3, 2023.
- Local health departments and facilities may develop and implement plans to recommend or require universal masking based on exposure risk for high-risk individuals and settings.
  - Check with your local health department.
  - Consider level of risk—skilled nursing facility residents are among the highest at risk.
  - Consider masking requirement for HCP in patient/resident-care areas or during patient/resident-care interactions.
  - Consider reinstating universal masking (if not currently required) during an outbreak response.
- <https://www.cdph.ca.gov/Programs/CID/DCDC/Pages/COVID-19/Guidance-for-Face-Coverings.aspx>.



# Vaccine Requirements for HCP

- Beginning April 3, 2023, the state of California will no longer require vaccination and boosters for HCP.
  - State Public Health Officer Order, “[HCW Vaccine Requirement](#)” (originally issued 8/15/21; will be rescinded 4/3/23)
- Per [CMS QSO 23-02-ALL](#), CMS continues to require HCP to have received the COVID-19 primary vaccine series, unless exempted.
  - [42 CFR 483.80\(d\)\(3\)](#) and [42 CFR 483.460\(a\)\(4\)\(i\)](#) also require long-term care facilities to offer COVID-19 vaccines to residents, clients, and staff onsite and in accordance with the CDC and ACIP COVID-19 vaccine schedule, which includes bivalent booster doses.
- Local health departments and healthcare facilities may implement COVID-19 vaccination requirements for HCP
- CDPH continues to strongly recommend that all HCP and high-risk individuals remain up to date on COVID-19, influenza, and other recommended vaccines.

ACIP = Advisory Committee on Immunization Practices

CDPH. State Public Health Officer Order of March 13, 2023. Available at <https://www.cdph.ca.gov/Programs/CID/DCDC/Pages/COVID-19/Order-of-the-State-Public-Health-Officer-Health-Care-Worker-Vaccine-Requirement.aspx>.

17 Centers for Medicare & Medicaid Services (CMS). Revised Guidance for Staff Vaccination Requirements. October 26, 2022. Available at <https://www.cms.gov/files/document/qs0-23-02-all.pdf>.

# COVID-19 Isolation Guidance

## Guidance for Local Health Jurisdictions on Isolation and Quarantine of the General Public

- In alignment with CDC recommendations, beginning March 13, 2023, a COVID-19 positive person may end isolation after 5 days if they feel well, have improving symptoms, and are fever-free for 24 hours, with less emphasis on testing negative.

**This updated guidance does NOT apply to HCP in settings, including SNFs, covered by [AFL 21-08.9](#), which is unchanged.**

- CDPH guidance for isolation of SNF residents is unchanged as specified in [AFL 22-13](#).

<https://www.cdph.ca.gov/Programs/CID/DCDC/Pages/COVID-19/Guidance-on-Isolation-and-Quarantine-for-COVID-19-Contact-Tracing.aspx>

# Questions?





This material was prepared by Health Services Advisory Group (HSAG), a Quality Innovation Network-Quality Improvement Organization (QIN-QIO) under contract with the Centers for Medicare & Medicaid Services (CMS), an agency of the U.S. Department of Health and Human Services (HHS). Views expressed in this material do not necessarily reflect the official views or policy of CMS or HHS, and any reference to a specific product or entity herein does not constitute endorsement of that product or entity by CMS or HHS. Publication No. CA-12SOW-XC-03082023-01