

Interim Clinical Considerations for Use of COVID-19 Vaccines | CDC

- COVID-19 vaccination is recommended for all people 12 years and older in the U.S. for the prevention of COVID-19.
- This includes people who are pregnant, breastfeeding, trying to get pregnant now, or might become pregnant in the future.

[COVID-19 Vaccines While Pregnant or Breastfeeding | CDC](#)

Interim Clinical Considerations for Use of COVID-19 Vaccines | CDC

- COVID-19 vaccination is recommended for all people 12 years and older. FDA approvals and authorizations vary by product.
 - Pfizer-BioNTech: persons aged ≥ 12 years
 - Pfizer-BioNTech product COMIRNATY and Pfizer-BioNTech COVID-19 vaccine have the same formulation and can be used interchangeably
 - Moderna: persons aged ≥ 18 years
 - Janssen: persons aged ≥ 18 years

Interim Clinical Considerations for Use of COVID-19 Vaccines | CDC

- Additional dose:
 - Administered when the immune response following a primary vaccine series is likely to be insufficient.
 - Recommended for moderately to severely immunocompromised people at least 28 days after an initial 2-dose mRNA primary vaccine series.
- Booster dose:
 - Administered when the initial sufficient immune response to a primary vaccine series is likely to have waned over time.
- No recommendation for immunocompromised who have received an additional dose to receive a booster dose at this time

Use this chart to help determine which COVID-19 vaccine is recommended for a patient, by age or health conditions.

		Dose	Age:	12-17	18-49	50-64	65+
Pfizer (Comirnaty)	Primary 2-doses			✓	✓	✓	✓
	Additional (3rd) dose for immunocompromised			✓	✓	✓	✓
	Booster dose at least 6 months after 2nd Pfizer dose						✓
	• Long-term care facility resident				✓	✓	
	• Underlying medical condition or increased risk of social inequities				may receive	✓	
• Increased risk of exposure from work or institutional setting				may receive	may receive		
Moderna	Primary 2-doses				✓	✓	✓
	Additional (3rd) dose for immunocompromised				✓	✓	✓
Johnson & Johnson	1 dose				✓	✓	✓

Resources:

- Western States Scientific Safety Review Workgroup, 9/24/2021
- Interim Clinical Considerations for Use of COVID-19 Vaccines (CDC)
- Who Is Eligible for a COVID-19 Vaccine Booster Shot? (CDC)

CDPH COVID-19 Vaccine Eligibility Chart

Upcoming COVID19 Vaccine Meetings

- [Vaccines and Related Biological Products Advisory Committee
October 14-15, 2021 | FDA](#)
 - Discuss EUA for Moderna and J&J booster doses for ≥ 18 y/o
 - Discuss NIH Mix and Match Booster Study
- [Vaccines and Related Biological Products Advisory Committee
October 26, 2021 | FDA](#)
 - Discuss EUA for Pfizer vaccine to children 5-11 y/o
- [Advisory Committee on Immunization Practices \(ACIP\) | CDC](#)
 - October 20-21, 2021 from 10am-5pm Eastern
 - November 2-3, 2021 from 10am-5pm Eastern

CDPH Toolkit for LTCF Vaccination Resources

Long-Term Care Facility (LTCF)

COVID-19 Vaccine Toolkit

The **LTCF COVID-19 Vaccine Toolkit** has been developed as a resource to ensure that Long-Term Care (LTC) residents and staff have continued access to primary series or booster doses of COVID-19 vaccine. The following are vaccine access options and resources.

https://eziz.org/assets/docs/COVID19/LTCF_Toolkit_10.01.21.pdf

CDPH: Toolkit for LTCF Vaccination Resources

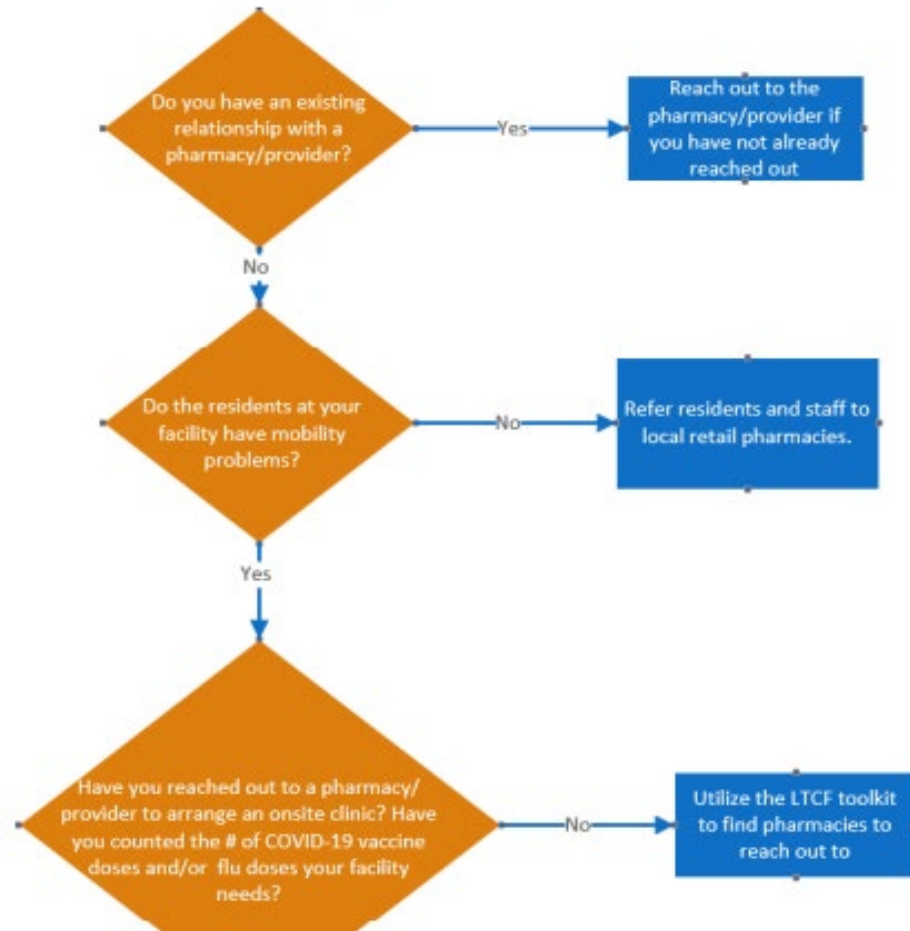
Toolkit includes:

- LTC Pharmacy and Retail Pharmacy contact information
 - including criteria for on-site vaccination clinics
- Information on how to enroll as a Vaccine Provider
- Local, State, and Federal Resources
- A user-friendly flow chart to help point LTCFs to vaccination resources that will fit their specific needs

CDPH: Toolkit for LTCF Vaccination Resources

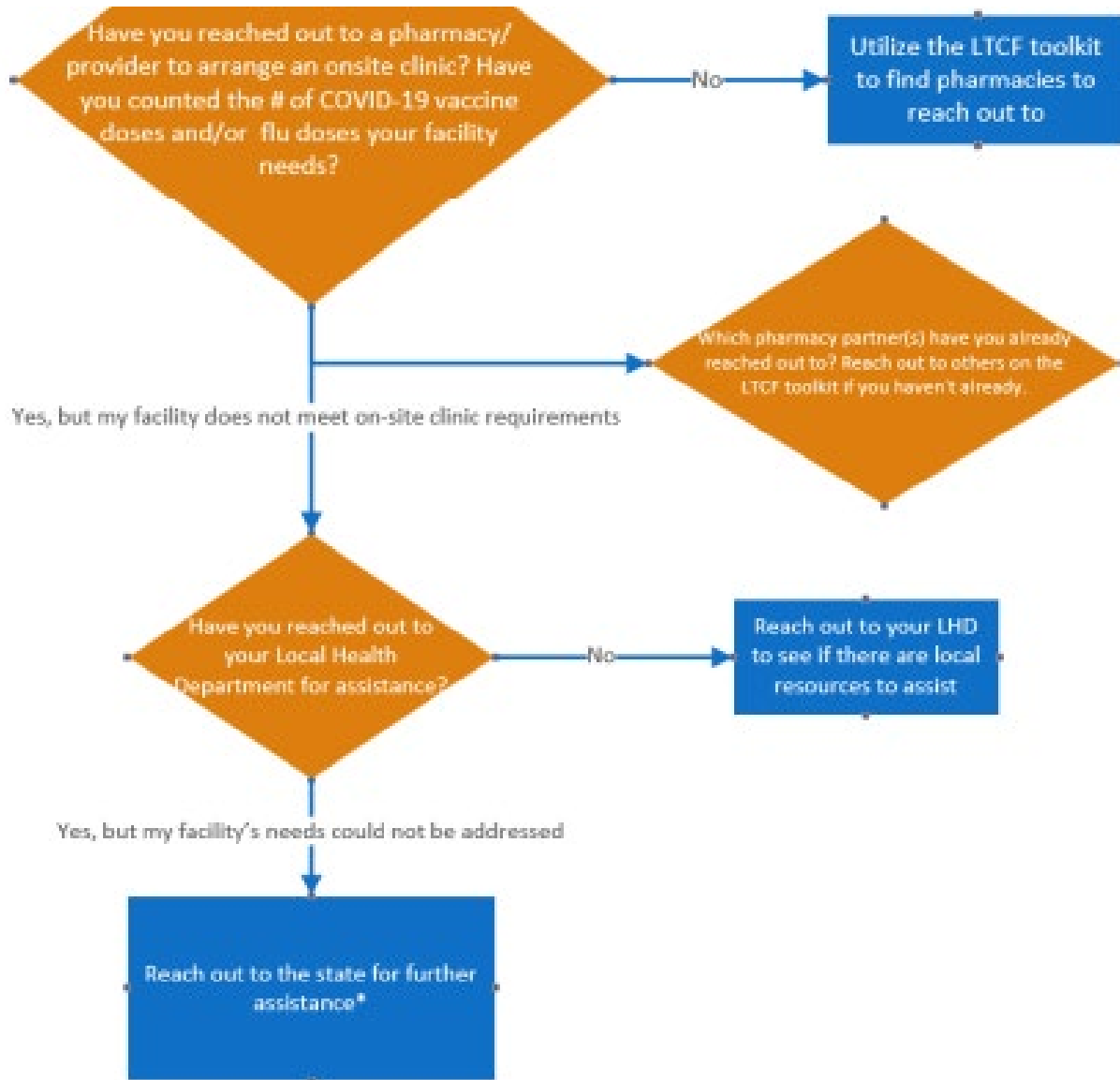
Appendix A.

LTCF: Who do I contact to get access to COVID-19 vaccine?



1. Do you have an existing relationship with a pharmacy/vaccine provider?
-> YES -> Reach out to your pharmacy
-> NO -> go to #2
2. Do residents at your facility have mobility problems?
-> NO -> Refer to local retail pharmacies
-> YES -> go to #3
3. Have you reached out to a pharmacy/provider to arrange an onsite clinic? Have you counted # of COVID-19 and/or flu doses your facility needs?
-> NO -> Use toolkit to find pharmacies

CDPH: Toolkit for LTCF Vaccination Resources



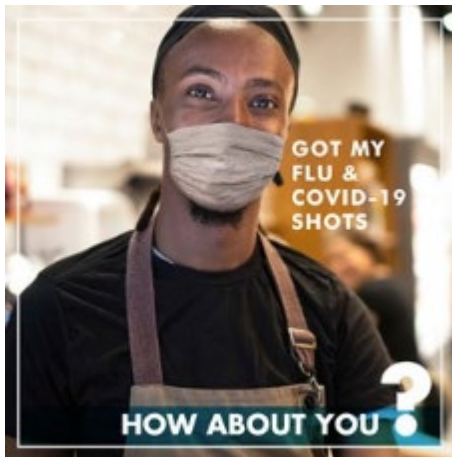
3. Have you reached out to a pharmacy/provider to arrange an onsite clinic? Have you counted # of COVID-19 and/or flu doses your facility needs?

-> YES, but my facility does not meet on-site clinic requirements

Options:

- i. Reach out to other pharmacies in LTCF toolkit
- ii. Reach out to your Local Health Department for assistance
- iii. If previous options don't work, reach out to state for further assistance

Vaccine Resources



- [California Immunization Coalition: Don't Wait Vaccinate Toolkit](#)
- [CDC Who Needs a Flu Vaccine and When](#)
- [CDC Interim Clinical Considerations for Use of COVID-19 Vaccines](#)
- [CDC COVID-19 Vaccines While Pregnant or Breastfeeding](#)
- [CDPH COVID-19 Vaccine Eligibility Chart](#)
- [CDPH Toolkit for LTCF Vaccination Resources](#)